

# VG-469

## REFERENCE DESIGN #4

TWO SLOT DRIVE BAY IMPLEMENTATION

5V ISA VCC ONLY

EXTERNAL VOLTAGE SENSE

PLUG & PLAY

NO DMA

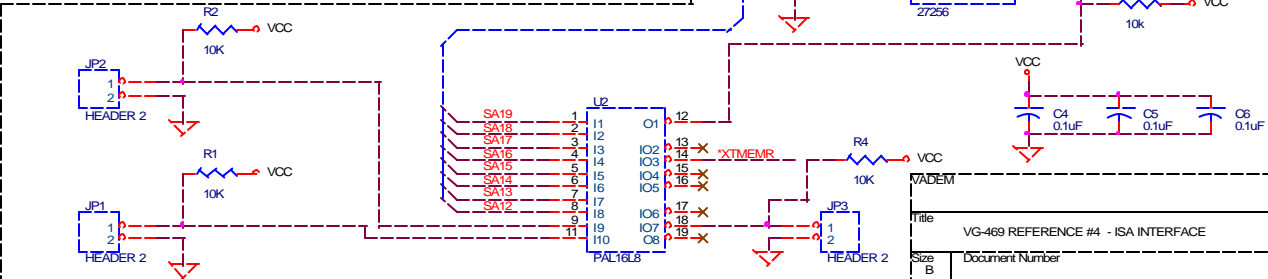
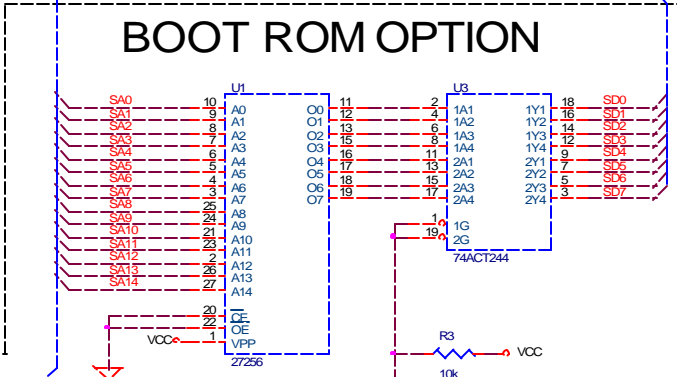
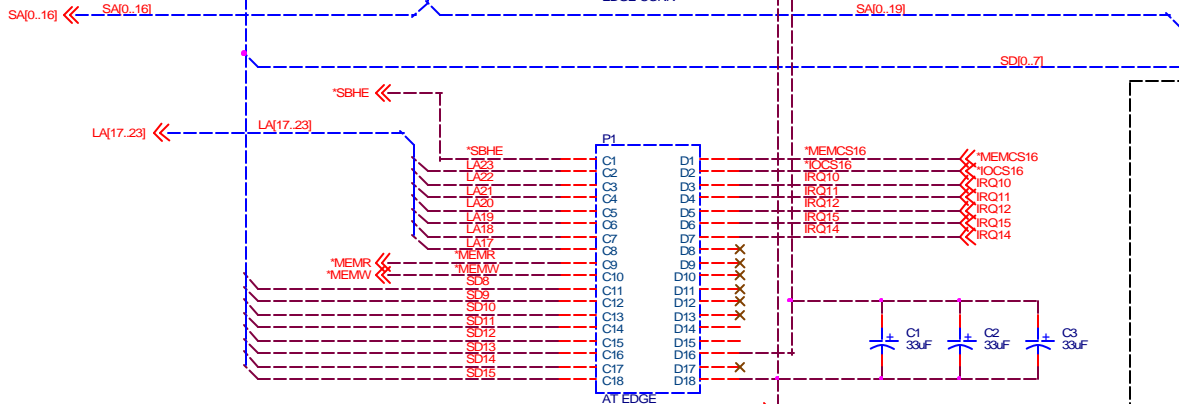
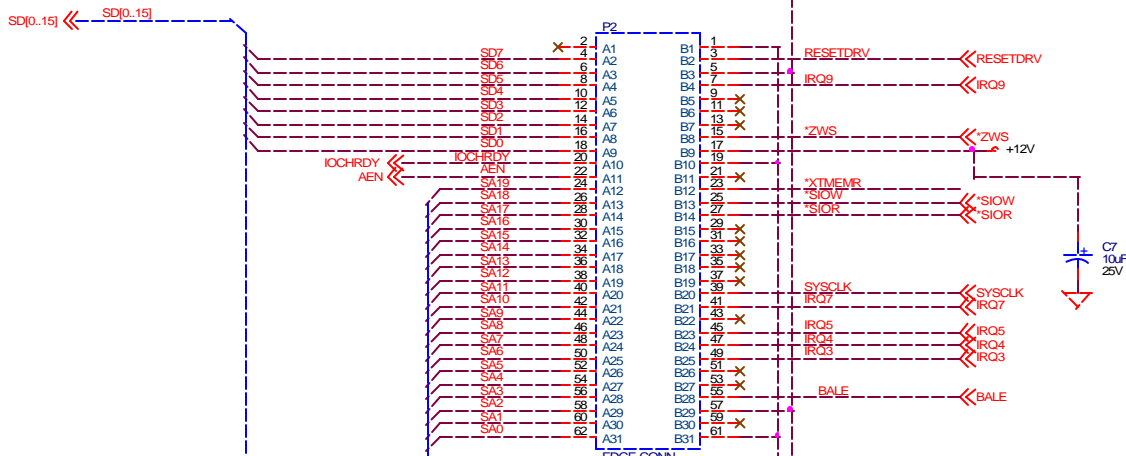
## ISA BUFFERS

LINK  
REF4PG2SCH  
REF4PG3SCH  
REF4PG4SCH  
REF4PG5SCH  
REF4PG6SCH  
REF4PG7SCH  
REF4PG8SCH  
REF4PG9SCH  
REF4PG10SCH

These schematics are provided as a design guide only.  
Vadem assumes no responsibility for final system design.

FILE=469REF\_4SCH

VADEM		
Title VG-469 REFERENCE DESIGN #4 - ISA BUFFER		
Size B	Document Number	Rev 3
Date: Thursday, February 06, 2003	Sheet 1	of 10

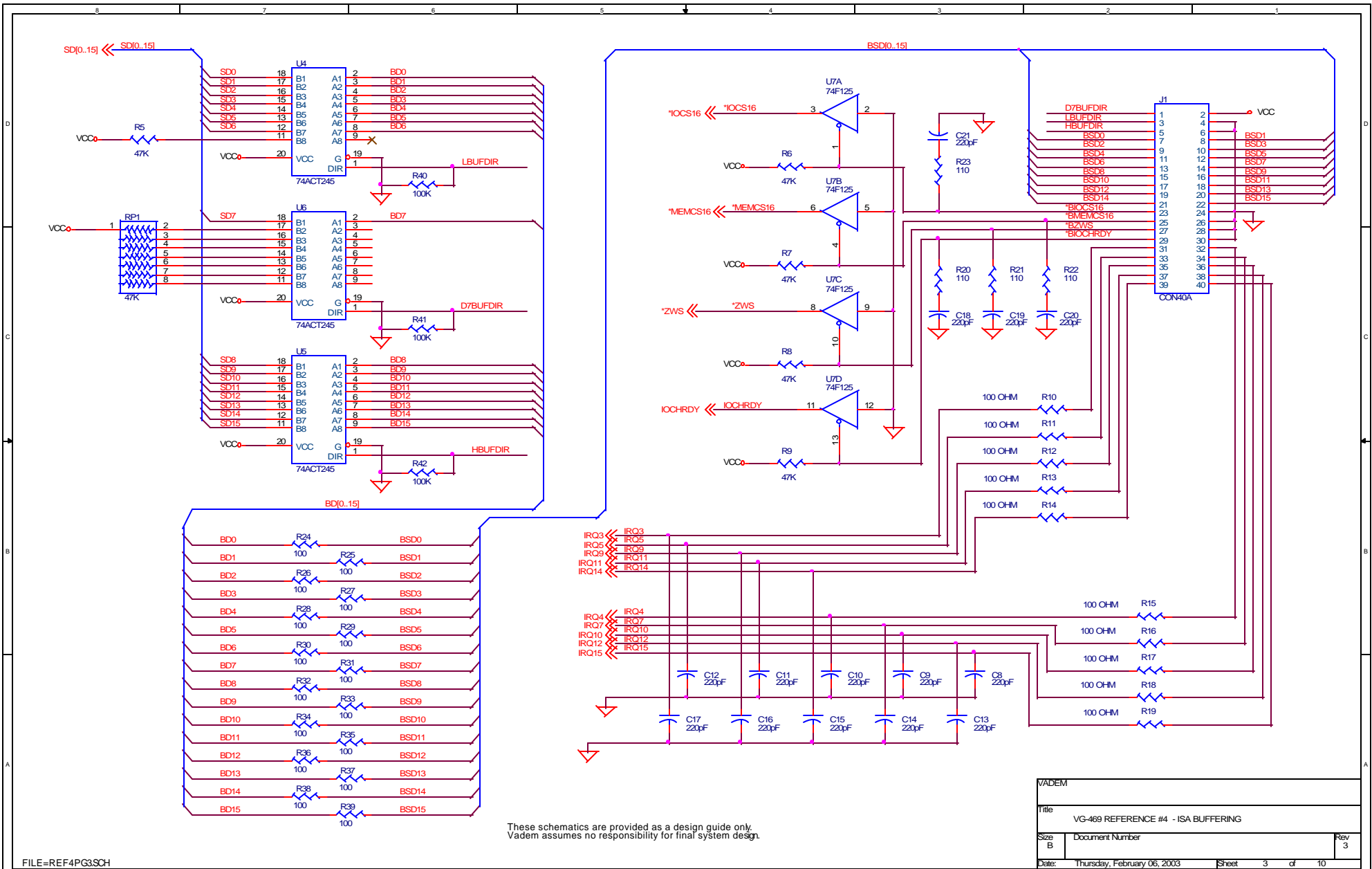


NOTE:  
 THE BOOT ROM OPTION HAS BEEN INCLUDED FOR SYSTEMS THAT WILL BOOT FROM A PCMCIA CARD. FOR SYSTEMS THAT DO NOT REQUIRE BOOTING FROM A PCMCIA CARD, THE COMPONENTS WITHIN THE DASHED LINE MAY BE DELETED.

THESE SCHEMATICS ARE PROVIDED AS A DESIGN GUIDE ONLY. VADEM ASSUMES NO RESPONSIBILITY FOR FINAL SYSTEM DESIGN.

FILE=REF4PG2SCH

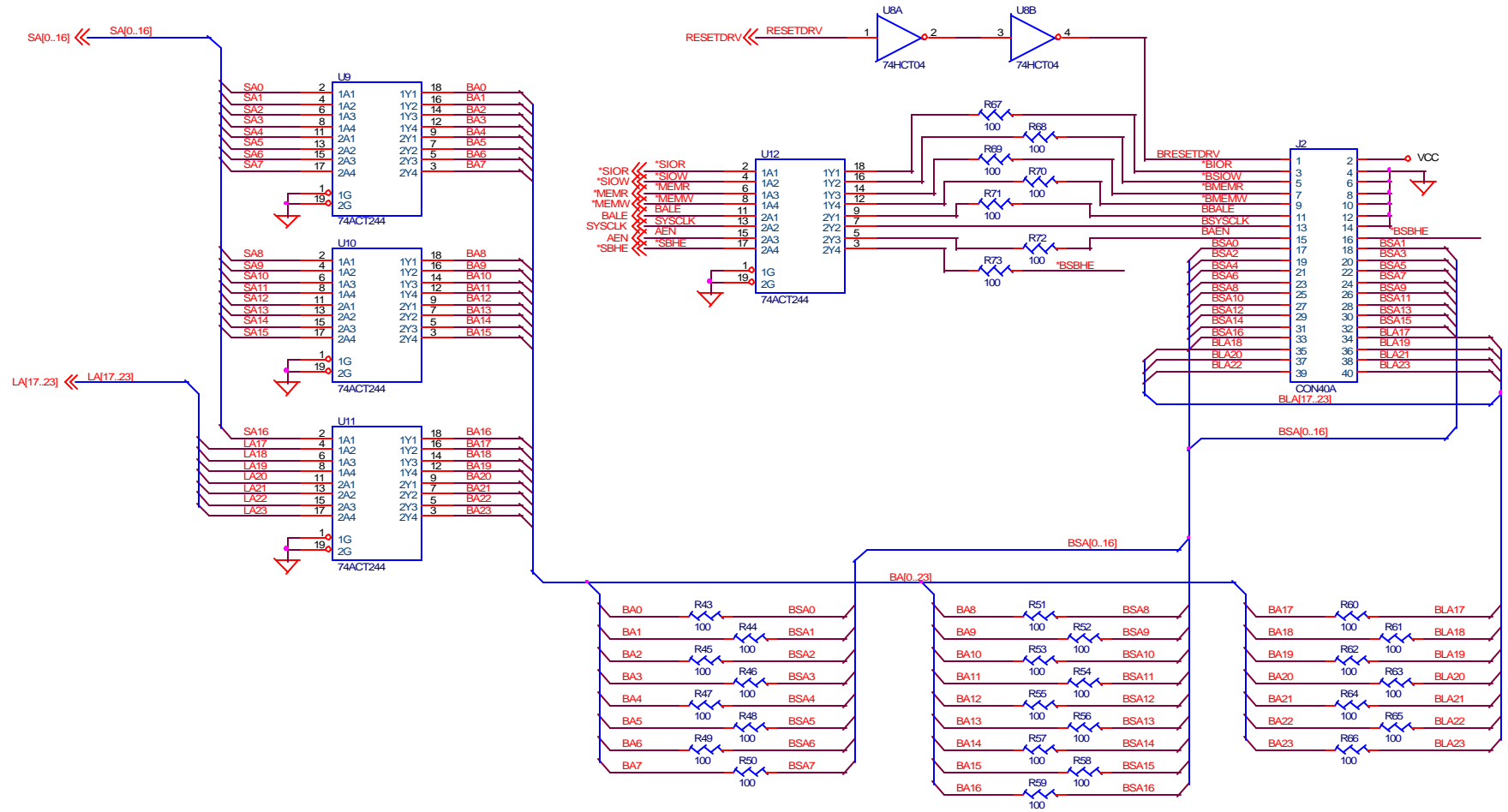
Title VG-469 REFERENCE #4 - ISA INTERFACE		
Size B	Document Number	Rev 3
Date: Thursday, February 06, 2003	Sheet 2	of 10



These schematics are provided as a design guide only.  
Vadem assumes no responsibility for final system design.

VADEM	
Title: VG-469 REFERENCE #4 - ISA BUFFERING	
Size: B	Document Number
Date: Thursday, February 06, 2003	Sheet 3 of 10
	Rev 3

These schematics are provided as a design guide only.  
Vadem assumes no responsibility for final system design.



VADEM		
Title VG-469 REFERENCE #4 - ISA BUFFERING		
Size B	Document Number	Rev 3
Date:	Thursday, February 06, 2003	Sheet 4 of 10

# VG-469

## REFERENCE DESIGN #4

TWO SLOT DRIVE BAY IMPLEMENTATION

EXTERNAL VOLTAGE SENSE

PLUG & PLAY

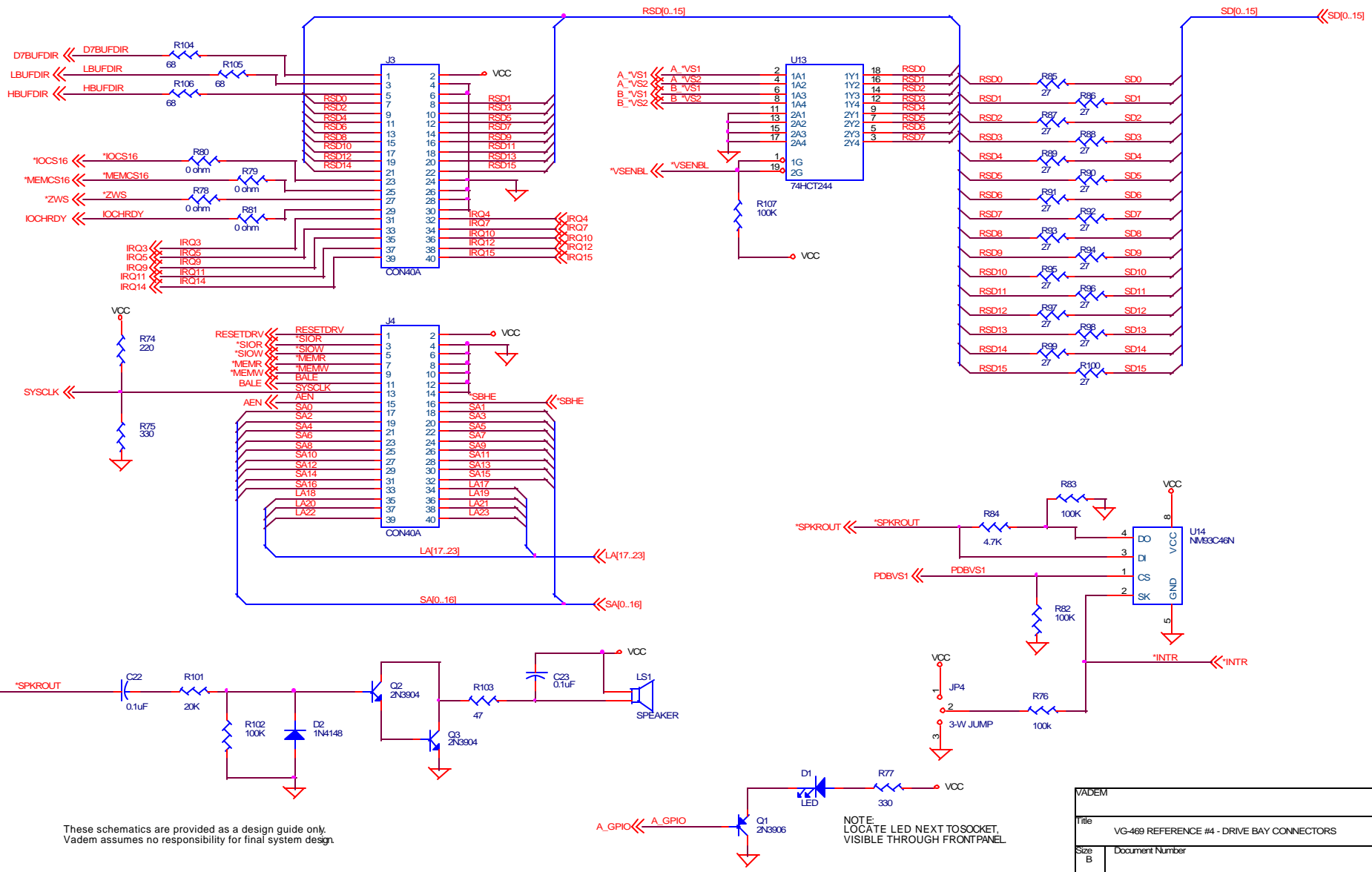
NO DMA

### DRIVE BAY

These schematics are provided as a design guide only.  
Vadem assumes no responsibility for final system design.

FILE=REF4PG&SCH

VADEM		
Title VG-469 REFERENCE #4 - DRIVE BAY		
Size B	Document Number	Rev 3
Date: Thursday, February 06, 2003	Sheet 5	of 10

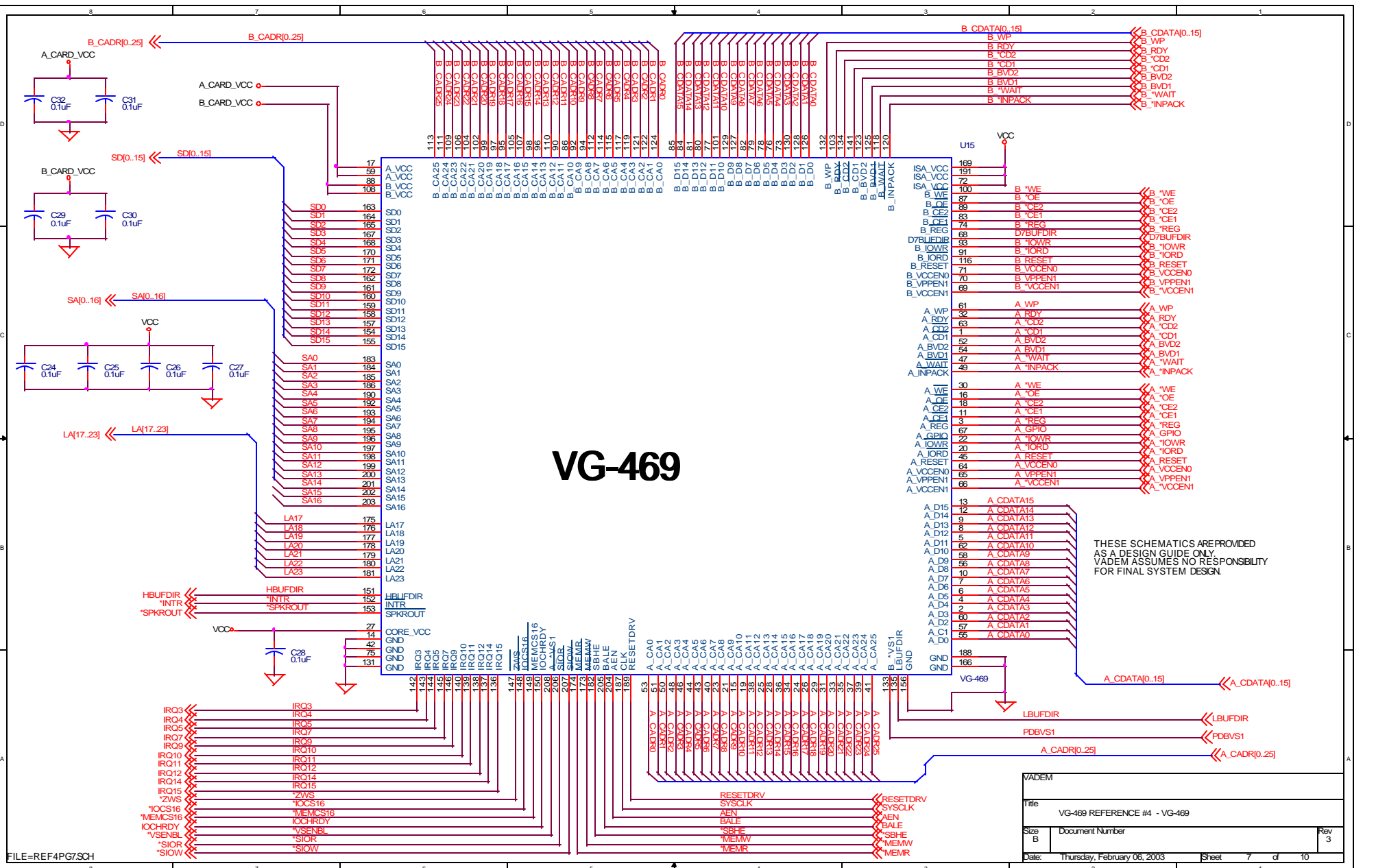


These schematics are provided as a design guide only. Vadem assumes no responsibility for final system design.

NOTE: LOCATE LED NEXT TO SOCKET, VISIBLE THROUGH FRONT PANEL.

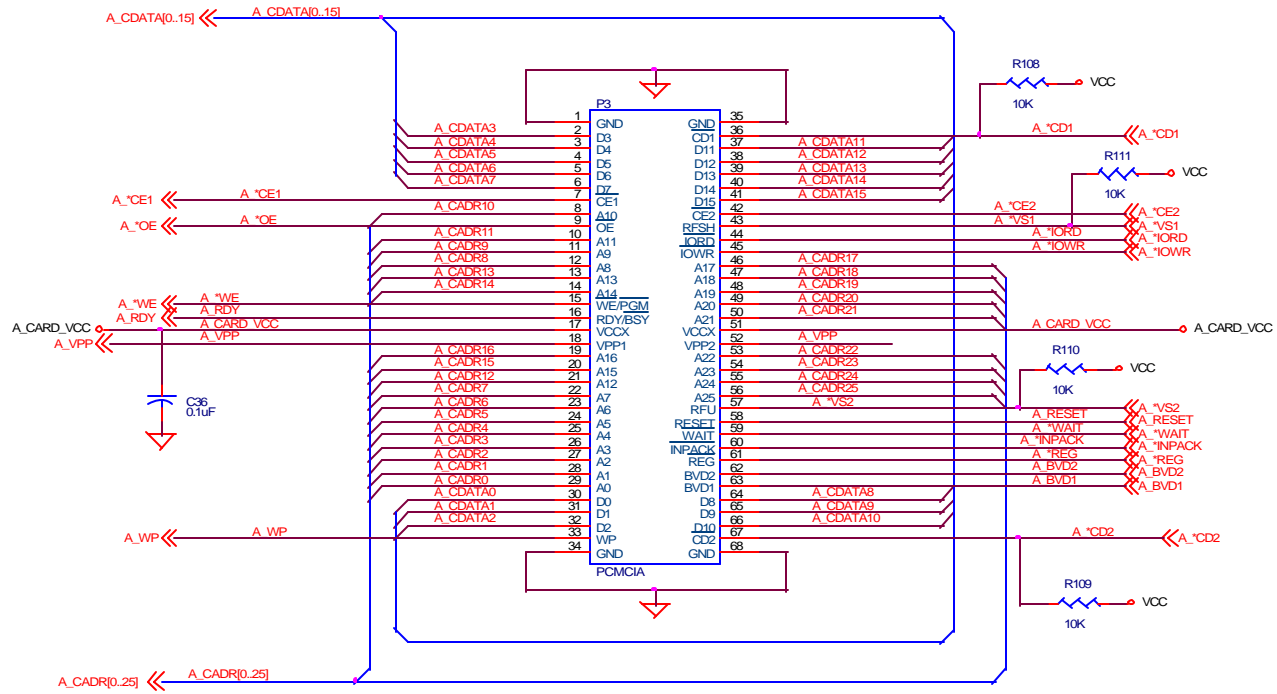
VADEM		
Title: VG-469 REFERENCE #4 - DRIVE BAY CONNECTORS		
Size: B	Document Number	Rev: 3
Date: Thursday, February 06, 2003	Sheet: 6	of 10

# VG-469

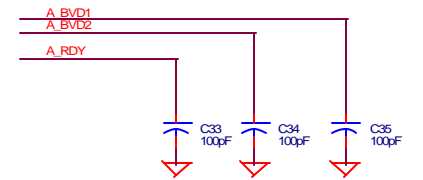


THESE SCHEMATICS ARE PROVIDED AS A DESIGN GUIDE ONLY. VADEM ASSUMES NO RESPONSIBILITY FOR FINAL SYSTEM DESIGN.

VADEM	
Title	VG-469 REFERENCE #4 - VG-469
Size	Document Number
Date:	Thursday, February 06, 2003
Sheet	7 of 10
Rev	3

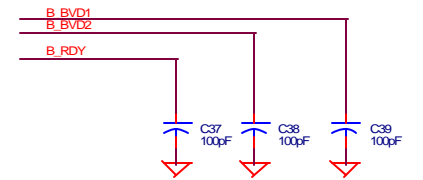
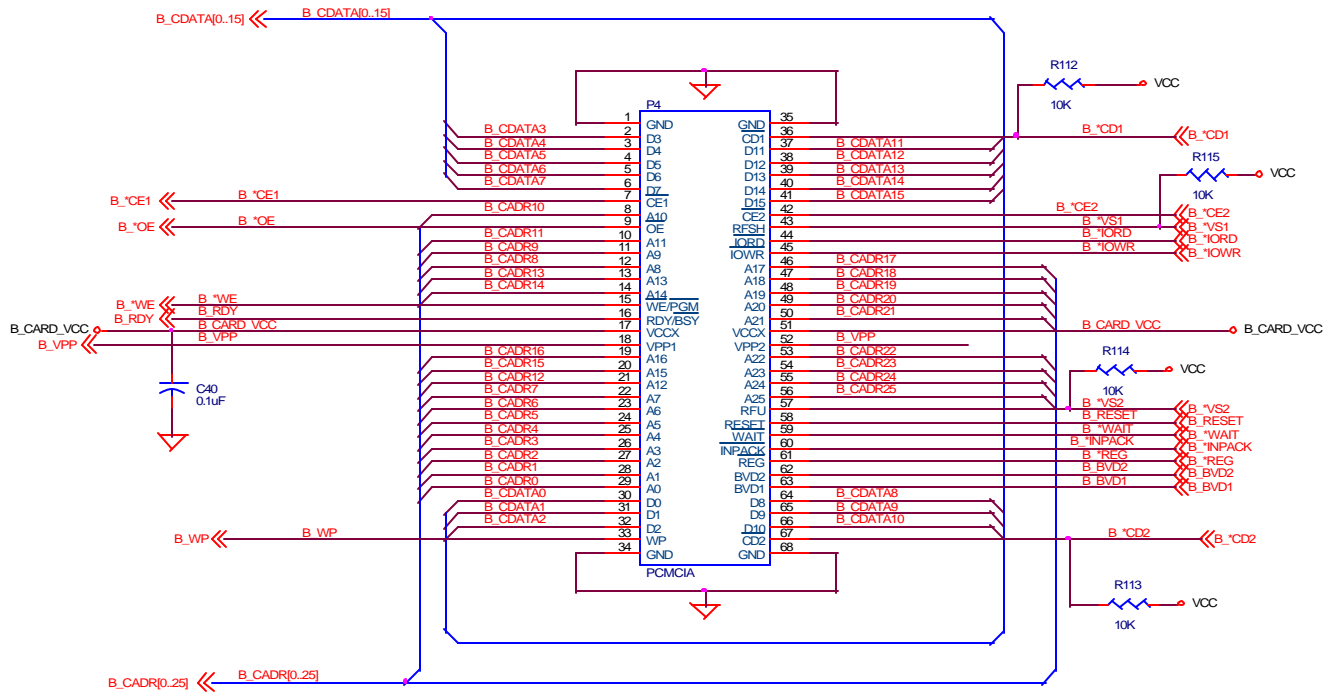


These schematics are provided as a design guide only.  
Vadem assumes no responsibility for final system design.



VADEM		
Title: VG-469 REFERENCE #4 - PCMCIA SLOT A		
Size B	Document Number	Rev 3
Date:	Thursday, February 06, 2003	Sheet 8 of 10

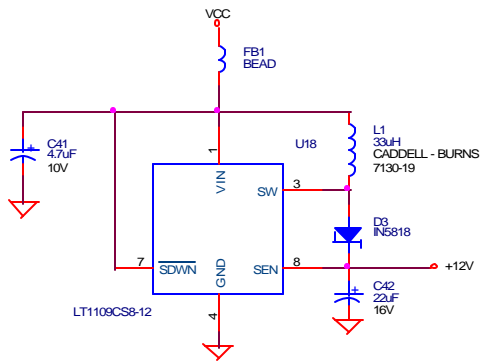




These schematics are provided as a design guide only.  
Vadem assumes no responsibility for final system design.

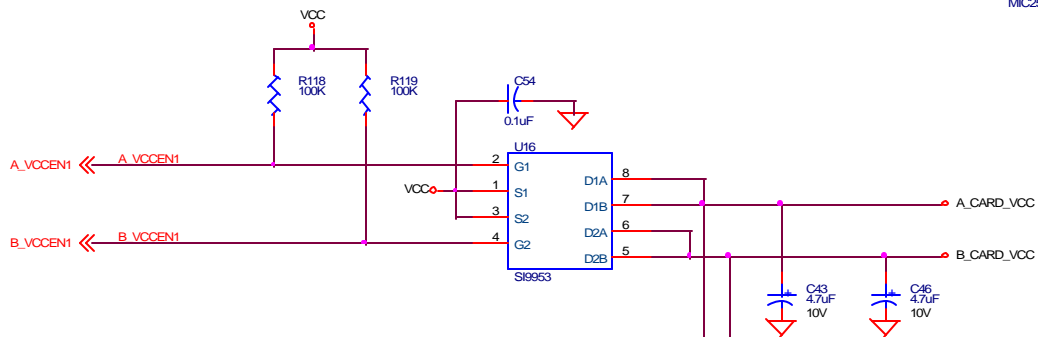
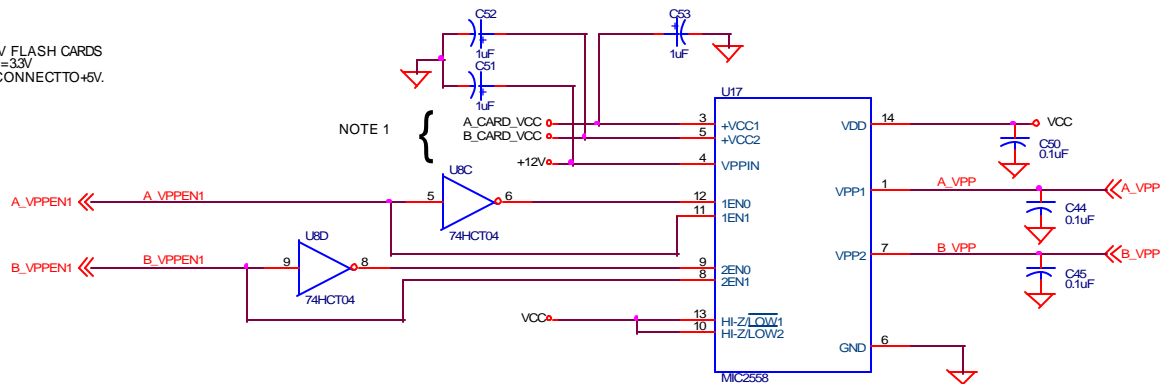
FILE=REF4PC9&SCH

VADEM		
Title VG-469 REFERENCE #4 - PCMCIA SLOT B		
Size B	Document Number	Rev 3
Date: Thursday, February 06, 2003	Sheet 9	of 10

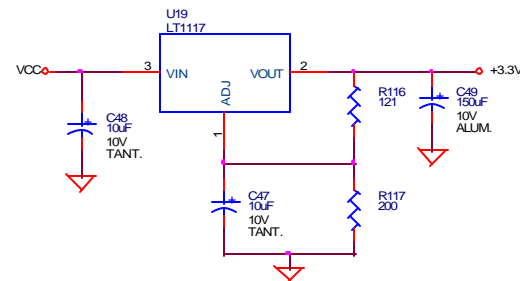
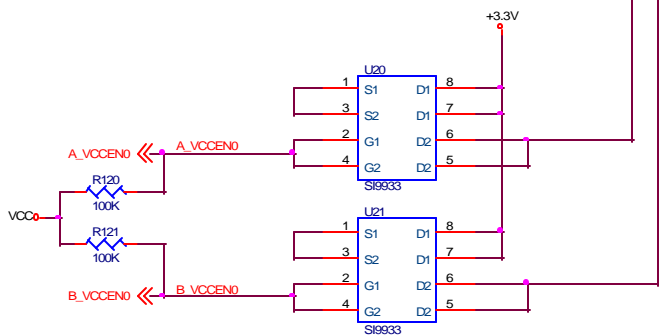


**NOTE:**

1. ASSUMES 3.3V FLASH CARDS REQUIRE VPP = 33V OTHERWISE, CONNECT TO +5V.



These schematics are provided as a design guide only. Vadem assumes no responsibility for final system design.



VADEM		
Title VG-469 REFERENCE #4 - POWER CONTROL		
Size B	Document Number	Rev 3
Date: Thursday, February 06, 2003	Sheet 10	of 10